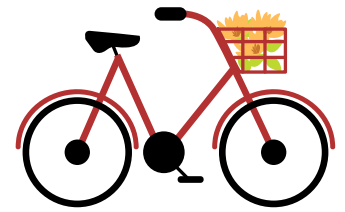




THE CHEESE TRAIL BY BIKE



Oxford County is known as the Dairy Capital of Canada, producing over 1 billion glasses of milk annually. With great milk comes award winning cheese. The Oxford County Cheese Trail is a way to explore Oxford County's cheese making past and present. It is not a physical trail but is a curated list of recommended stops through the county to be visited by car or bike. You decided which stops you would like to visit and then begin exploring. On these routes you'll find two cheese factories, shops selling local cheese, restaurants, artisans and more.

We do not have a cheese trail cycling route map but attached find our cycling routes with Cheese Trail stops marked. We also included a general road map that has a driving route for the Cheese Trail with stops colour-coded and numbered. We do not recommend cycling the driving route. Instead use the enclosed cycling route map, cheese trail brochure and notes below. You will find cheese trail stops on the following cycling routes (see cycling map for route details):

- o Oxford County South (92 KM)
- o Ingersoll to Woodstock (34 KM)
- o Blandford Blenheim Tour (67 KM)
- o Detours:
- o Tillsonburg Airport Run (27 KM)
- o Folden's Sweaburg Salford (17-31 KM)
- o Norwich Otterville (34 KM)



CHEESE TRAIL CYCLING ROUTE NOTES

OXFORD COUNTY SOUTH (92 KM)

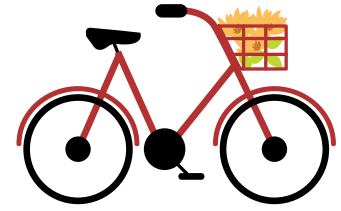
- **Wild Comfort Body Care** (natural body care) & **Gunn's Hill Artisan Cheese** (tastings, tours, picnic area): This is a 2km detour on a gravel road (with some hills). From Middletown Line turn west on Gunn's Hill Road. You will find Wild Comfort and Gunn's Hill Cheese on the south side of the road (in that order). For details on opening hours, unique experiences and tours, visit their websites at www.wildcomfort.ca and gunnshillcheese.ca.
- While not a Cheese Trail stop, **Makkink's Sunflower Farm** is on Kellett Road (called North St in Tillsonburg) that connects to Cornell Rd. Tours can be booked in advance. www.Makkinks.com
- This route passes through Ingersoll and Woodstock where most of the trail stops can be found.
- Accommodations on this route: Elm Hurst Inn (Ingersoll), Comfort Inn (Ingersoll), Pittcock CA (Woodstock), R Wee Inn (Otterville)

INGERSOLL & WOODSTOCK (34 KM)

INGERSOLL

- **Leaping Deer Adventure Farm** is en route between Ingersoll & Woodstock on Clarke Road. Grab a butter tart and park you bike in the tractor bike rack!
- **Elm Hurst Inn & Spa** (patio, bike-friendly accommodation), just off Clarke Rd. on Hwy 19
- **Ingersoll Cheese Museum**: a quick ride through 3 urban parks on the Thomas Ingersoll Trail connects the museum to the downtown (seasonal & weekend hours)
- **Louie's Pizza & Pasta** (patio): Detour from Charles up North on Thames to Bell St.
- **Downtown stops**: The Wine Cellar & Cheese Shop (cheese counter), Patina's (artisan goods), The Olde Bakery Cafe (cafe, restaurant, bakery), Chocolatea (chocolates using local cream) Foodland Ontario (Local Dairy Products & Quality Sheep Milk cheeses), The Thomas Ingersoll Trail connects downtown Ingersoll to the Ingersoll Cheese Museum

THE CHEESE TRAIL BY BIKE



INGERSOLL & WOODSTOCK CONTINUED(34 KM) WOODSTOCK

- **Upper Thames Brewing Company**, or their new location, The Brickhouse Brewpub (patios)
- **Downtown** (bike rack at City Hall corner of Dundas & Reeve St.): Habitual Chocolate (home made ice cream, hot chocolate, bean to bar chocolate), Woodstock Art Gallery (rotating exhibits and Florence Carlyle Collection), Charles Dickens Pub (British pub with over a dozen local cheese menu items), SixThirtyNine (patio--Casual fine dining specializing in local food), Chateau la Motte (bike-friendly accomodation) in downtown heritage district
- Accommodations on this route: Chateau la Motte (Woodstock), Pittock Conservation Area (Woodstock), Quality Hotel & Suites (Woodstock), Comfort Inn & Suites (Ingersoll), Econo Lodge (Woodstock), Elm Hurst Inn (Ingersoll), Holiday Inn Express (Woodstock), Best Western Plus (Woodstock)

OXFORD SOUTH DETOURS

TILLSONBURG AIRPORT RUN (27KM, GRAVEL)
This route connects to Oxford County South providing a detour on Airport Road and Cranberry Line (connecting Dereham Line to North St in Tillsonburg). This does have a gravel section (see cycling map notes). If you take this detour you will go by Coyles, Tillsonburg Airport & Skyway Café & Sundown Farms.
Accommodations along this route: Howard Johnson(Tillsonburg), R&F Alpacas (Tillsonburg) and 7 Gables (Tillsonburg)

FOLDEN'S, SWEABURG, SALFORD

This can be added onto the Ingersoll Woodstock route as an extension off of Clarke Rd (either to Sweaburg or all the way to Salford). Jakeman's Maple Farm is located just outside of Sweaburg approximately 600 m north on Trillium Line. Be sure to take a stroll through Trillium Woods across the road from Jakeman's.

Accommodations on this route: For a complete list of accommodations nearby head to TourismOxford.ca. In rural areas you'll also find a number of house rental accommodations on popular booking sites.

NORWICH-OTTERVILLE

This route intersects with Oxford County South at Middletown Line (Pleasant Valley Rd and Otterville Road). The Norwich Museum offers a butter churning experience (seasonal, book in advance). Also take time to explore downtown Norwich (bike racks along Main St). Visit the Norwich bakery for Dutch specialties and relax on the patio at the downtown restaurant. If you are craving BBQ, visit Ritchies (South of downtown on Highway 59) for brisket and fresh milkshakes.
Accommodations along this route: R Wee Inn (Otterville)

For a complete list of accommodations nearby head to TourismOxford.ca. In rural areas you'll also find a number of house rental accommodations on popular booking sites.

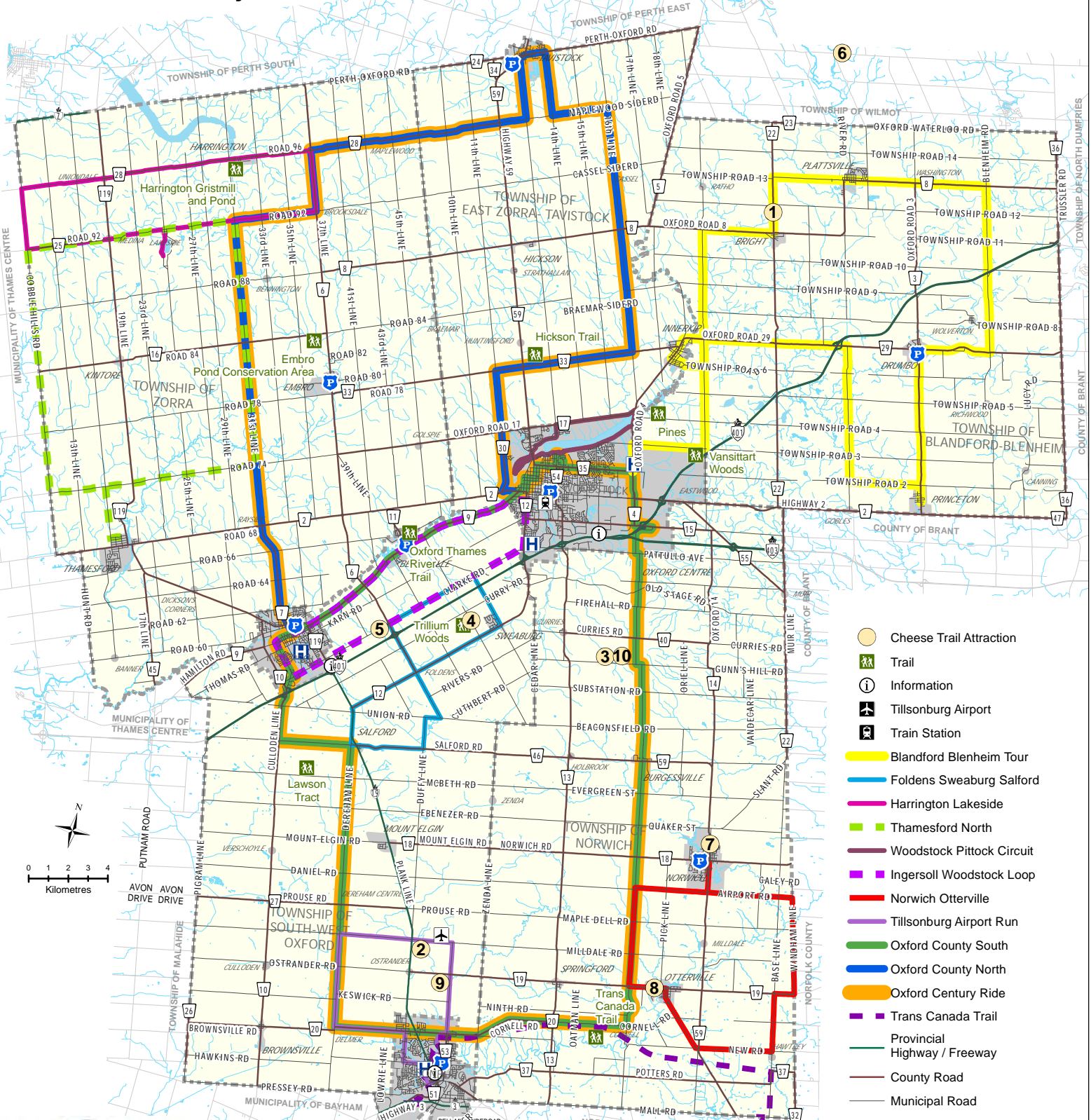
BLANDFORD-BLENHEM TOUR (INNERKIP, PLATTSVILLE, DRUMBO--67KM_

- Oxford County South and Blandford-Blenheim routes can be connected by travelling County Rd 4- Township Rd. 4- Blandford Road
- **Bright Cheese and Butter** is located on Road 22 on the west side. This is the oldest cheese factory on the trail with a small retail shop in the thick of the production space. This provides a glimpse of cheese factories of years gone by and cheddars like the pioneers made!
- See TourismOxford.ca for accommodations



RideOxford.ca Cheese Trail

Oxford County



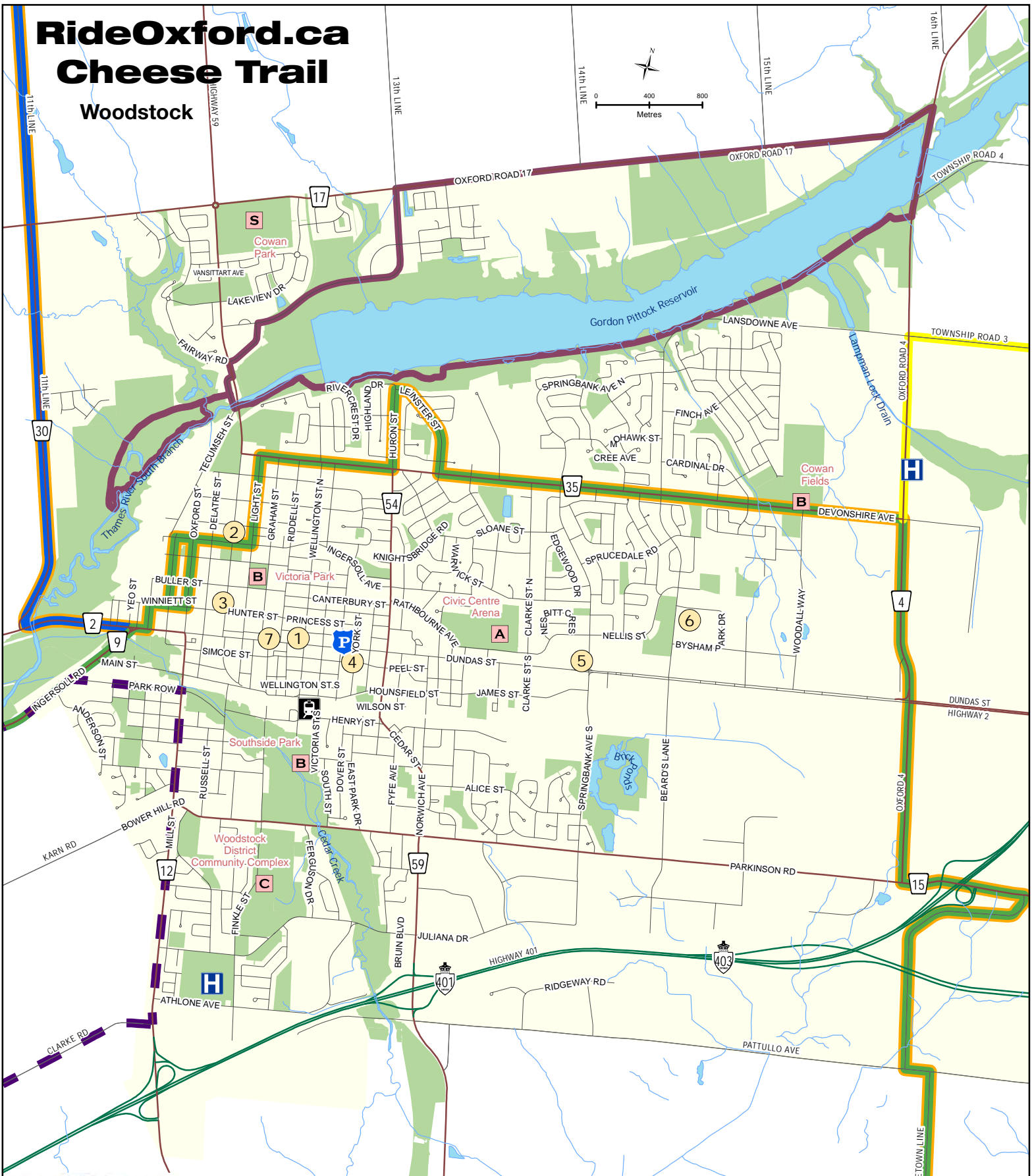
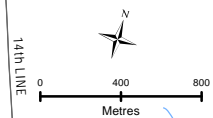
- Cheese Trail Attraction
- Trail
- Information
- Tillsonburg Airport
- Train Station
- Blandford Blenheim Tour
- Foldens Sweaburg Salford
- Harrington Lakeside
- Thamesford North
- Woodstock Pittock Circuit
- Ingersoll Woodstock Loop
- Norwich Otterville
- Tillsonburg Airport Run
- Oxford County South
- Oxford County North
- Oxford Century Ride
- Trans Canada Trail
- Provincial Highway / Freeway
- County Road
- Municipal Road



Oxford County	
Bright Cheese & Butter Manufacturing Co. Ltd.	1
Coyle's Country Store	2
Gunn's Hill Artisan Cheese Ltd.	3
Jakeman's Maple Farm	4
Leaping Deer Adventure Farm and Market	5
Mountainoak Cheese Ltd.	6
Norwich and District Historical Society Museum & Archives	7
R Wee Inn	8
Sundown Farms	9
Wild Comfort Body Care	10

RideOxford.ca Cheese Trail

Woodstock

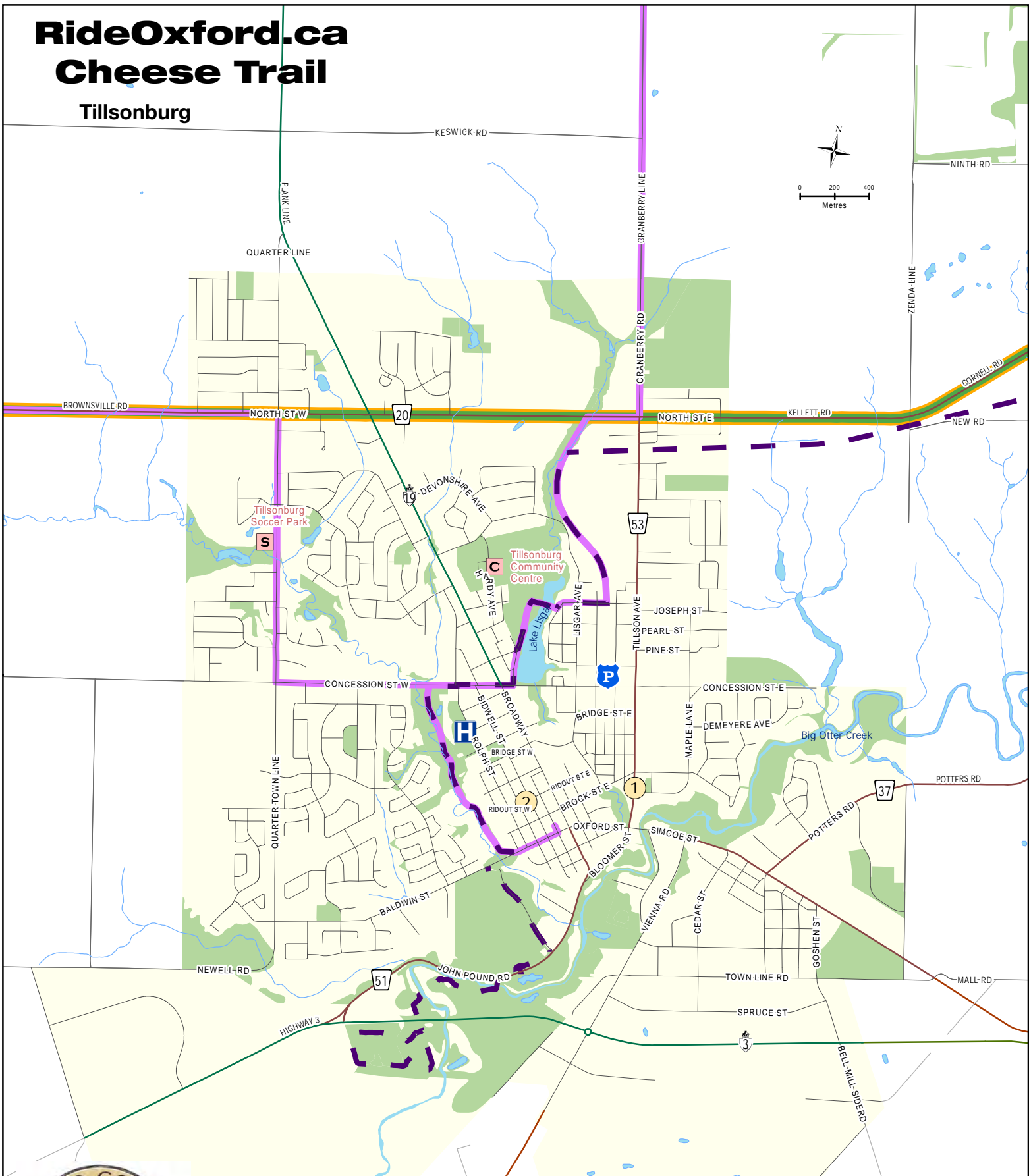


- Cheese Trail Attraction
- A Arena
- B Ball Diamond
- C Community Centre
- S Soccer
- P Train Station
- H Hospital
- Blandford Blenheim Tour
- Foldens Sweaburg Salford
- Ingersoll Woodstock Loop
- Oxford County South
- Oxford County North
- Oxford Century Ride
- Woodstock Pittock Circuit
- Provincial Highway / Freeway
- County Road
- Municipal Road
- P Police
- H Hospital

Woodstock	
Charles Dickens Pub	1
Chateau La Motte	2
Habitual Chocolate	3
Six Thirty Nine	4
Springbank Snow Countess Statue	5
Upper Thames Brewing Company	6
Woodstock Art Gallery	7

RideOxford.ca Cheese Trail

Tillsonburg

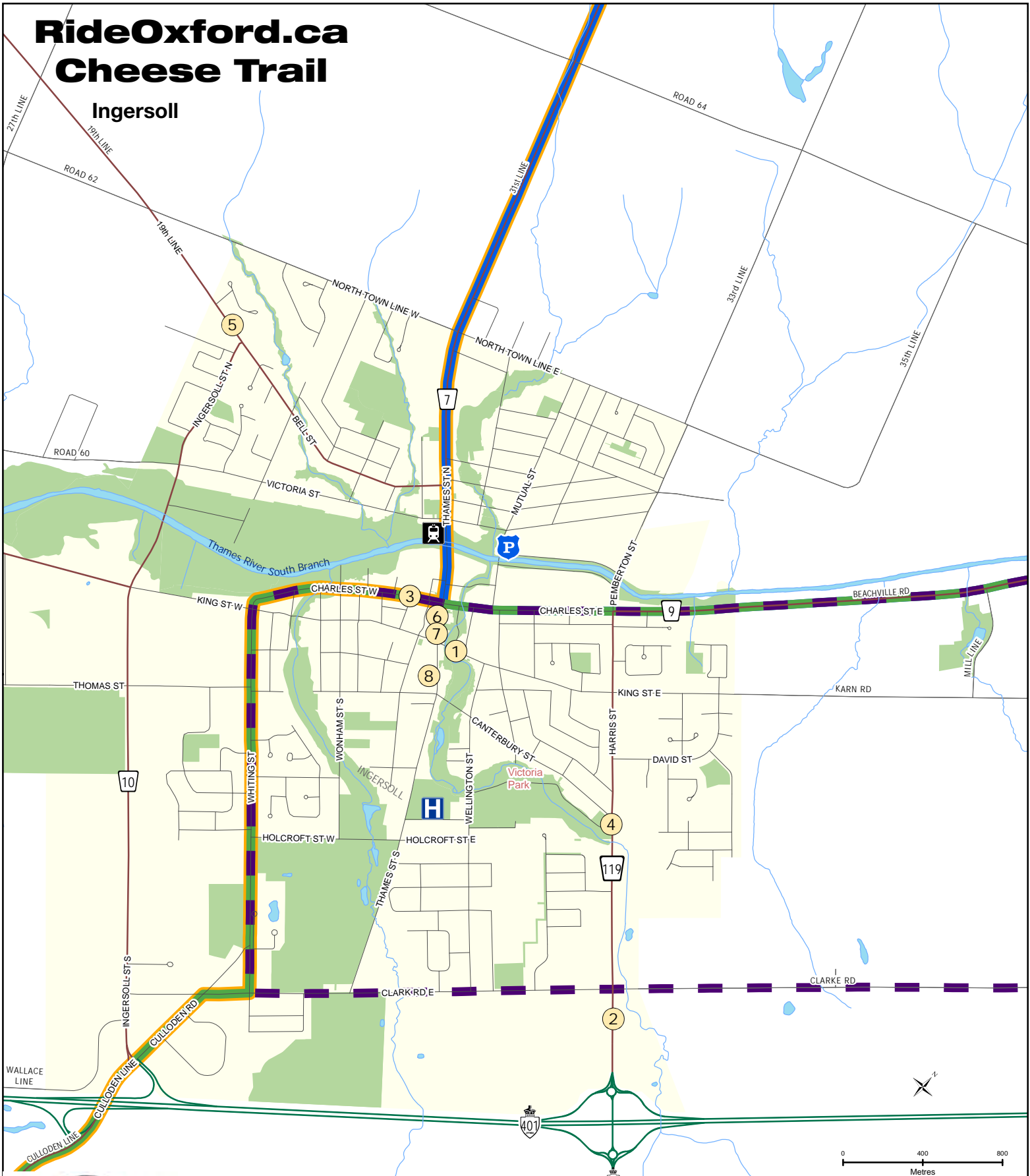


- Cheese Trail Attraction
- Community Centre
- Soccer
- Police
- Hospital
- Trans Canada Trail
- Oxford County South
- Oxford Century Ride
- Tillsonburg Airport Run
- Provincial Highway / Freeway
- County Road
- Municipal Road

Tillsonburg	
Annandale National Historic Site	1
Cup and Cake (The)	2

RideOxford.ca Cheese Trail

Ingersoll



CheeseTrailStop

- Cheese Trail Attraction
- Arena
- Ball Diamond
- Community Centre
- Soccer
- Train Station

- Foldsnes Sweaburg Salford
- Ingersoll Woodstock Loop
- Oxford County South
- Oxford County North
- Oxford Century Ride

- Provincial Highway / Freeway
- County Road
- Municipal Road
- Police
- Hospital

Ingersoll	
Chocolatea	1
Elm Hurst Inn & Spa	2
Foodland Ingersoll	3
Ingersoll Cheese Museum	4
Louie's Pizza & Pasta	5
Olde Bakery Café	6
Patina's Gifts of Art & Craft	7
Wine Cellar (The) & Cheese Shop	8